

Term 1 Dates

MARCH

8th Curriculum Day - No students attend school

11th Public Holiday - Labour Day

13th/14th/15th NAPLAN

20th Science Dome incursion P/I D, P/I E, 1/2, 2/3

21st Harmony Day

25th School Council AGM

27th Science Dome 3/4, 4/5, 5/6

28th Last Day of Term 1 - School Finishes at 2:20pm

29th Good Friday

APRIL

15th Term 2 starts

Principal's Report

Hello everyone,

I would like to congratulate the following people for being newly elected to school council; Isabelle Thomson, Mark Thomson, Anthony Read, and Kathrine Pye, and I would like to welcome back re-elected members Sarah Suban, BJ McNeilly, Michelle de Haan and Alison Wylie. They will join myself, Meredith Fell, Kylie D'Amico and Rebecca Beasley to complete our School Council for 2024. On March 25th, we will hold our first meeting and we will establish our sub committees. We will communicate the sub committees via compass and encourage our community to sign up and join one of them.

This week we have a Curriculum Day on Friday, this is a student free day. We (the staff) will be meeting with our colleagues from NESST (North East Small Schools Team) and spend the day learning together.

Next week our grade three and five students will undertake NAPLAN. This is a national assessment that shows us where we need to improve teaching and learning. The students will complete writing, language conventions, reading and numeracy. It will be completed online, except for grade three writing. The assessment also gives us an opportunity to compare our teacher judgement with NAPLAN. We receive a report that aligns student NAPLAN results against teacher judgements. This is an area we are working to improve, as we are often more harsh with our teacher judgement assessments.

Our tennis program finished last week and our swimming program finishes this week. Both of these programs have been very well received by the students, but we are certainly looking forward to a more quiet end to the term. Our Space theme will be concluding with an incursion from Science Dome. I am looking forward to this and I am hoping to experience the dome myself! Have a wonderful week,

Mel



Stars of the Week

Week 4

- P/1D Quinn P/1E Liam C
- 1/2. Flynn 2/3 Loki
- 3/4 Louis P 4/5 Justin
- 5/6 Olive and Riley



Stars of the Week

Week 5

- P/1D Joshua P/1E Darcy
- 1/2 M 2/3 Eli and Hayley
- 3/4 Bailey 4/5 Henry
- 5/6 Ethan A



Learning Showcase

In week four, our P/1 D students shared drawings of their family.

In week five, our grade 1/2 students shared their knowledge of water safety.



Outside School Hours Care

Newsletter



05/032024

Camp Australia Wattle Glen Primary school OSHC

Your
OSHC.



Big Art Fridays

On Fridays, we **pARTy!**

Every Friday in After School Care

Book now

A message from your Coordinator

Dear Parents, Teacher, Students and Community Members.

Wow we are already half way through the term. Its true what they say time does fly when you are enjoying yourself.

On the 3rd of March Rocketeers (holiday club) film festival awards were televised on YouTube. A massive well done to Xavier who won an award for his home animation.

I have some fantastic news for term 2 that Virtual Reality is making a return to the service this will include mini beasts, ancient China, human body and Ancient Greece. We will be deciding as team on which one they would prefer. I will advise dates nearer to the time. As always at this time of year please pack an extra hat and sunscreen (if they can't have certain types) for your child for when they attend afterschool care as we have implemented the SunSmart policy.

As always if you have any questions or concerns, please don't hesitate to reach out.

Thank you

Elizabeth OSHC coordinator.

Activities coming up

- Oobleck science
- Scribble art fun
- Tye Dye Calico

Make a booking

Join in the fun of Outside School Hours Care activities and experiences with Your OSHC and Rocketeers.

Book now

Register free and book in 24/7 via our app

To attend our program, you must register your child. You can register an account with us at pp.campastralia.com.au or by downloading our Camp Australia smartphone app from the Apple App Store or on Google Play. Once registered, it's easy to make bookings and manage your account.



Find out more and book now at www.campastralia.com.au

WGPS PTFA FUNDRAISING AND COMMUNITY EVENTS

EVENTS

*Term 1 Events- let us know if
you can help*



Easter Raffle

We ask for assistance for

- putting the raffle tickets together and distributing them to the students
- Putting together the raffle prizes

Call out for donations

We ask for assistance for

- emailing and asking for donations for our raffles for the upcoming fete
- collecting donations for select auction



If you would like to help with any of
these events please email the office or
phone 9438 1259

Camps, Sports and Excursions Fund (CSEF)

The Camps, Sports and Excursions Fund helps eligible families to cover the costs of school trips, camps and sporting activities. If you have a valid means-tested concession card, such as a Veterans Affairs Gold Card, Centrelink Health Care Card or Pensioner Concession Card, or are a temporary foster parent, you may be eligible. There is also a special consideration category for asylum seeker and refugee families. Payment amounts this year will probably be the same as 2023, \$125 for eligible primary school students. Payments are made direct to the school to use towards expenses relating to camps, excursions and sporting activities for the benefit of your child. It is important that funding made available in 2024 supports students to participate in school trips, camps and sporting activities this year rather than being held for future years. This funding can also be used in conjunction with any funding accrued from previous years. If you applied for CSEF through our school last year, you do not need to complete an application form this year, unless there has been a change in your family circumstances.

If you would like to apply for the first time, please contact the school office on 9438 1259 and ask for an application form. You can also download the form, and find out more about the program and eligibility, on the Department of Education and Training's Camps, Sports and Excursions Fund web page ([Camps, Sports and Excursions Fund](#)) or Check with the school office if you are unsure, and please return completed forms to the school office as soon as possible.

Come and play the Wattle Glen way in 2024!

Wattle Glen PS is inviting
all children starting
school in 2025 to three
afternoon play sessions.

This is a great opportunity
to see Wattle Glen
Primary School, meet out
friendly staff and form
new friendships!

Session one:
13th of February
3:45pm- 4:30pm

Session two:
6th of March
3:45pm- 4:30pm

Session three:
21st of March
3:45pm- 4:30pm

Call or email the office to
enrol your child in these
exciting experiences!

 wattle.glen.ps@education.vic.gov.au



Happy 2024 Wattle Glen families!

I'm very happy to announce that this year, I'm offering both individual and group lessons for singing.

Group singing is a great way to build confidence and start pitch training in a fun and inclusive way.

The groups have a minimum of 2 students and a max of 4.

Junior groups are a mix of grade prep- 3s priced at \$5 per 1/2 hour lesson

Senior groups are a mix of grade 3-6s

Prices at \$10 per 1/2 hour lessons.

Individual lessons are still offered for student grade 3 and above, they are priced at \$30 per 1/2 hour lesson.

Lessons take place on a Wednesday morning and Grade 3s could be placed in either group depending on the child's confidence level or group availability

If you have any question please email at kylahcreatesmusic@gmail.com

I'm looking forward to a great year ahead!

- Kylah bullock

Kylah Creates music



Annual privacy reminder for our school community

Our school collects and uses student and parent personal information for standard school functions or where permitted by law, as stated in the [Schools' Privacy Policy](#) and the [Schools' Privacy Collection Notice](#).

Our Photographing, Filming and Recording Students Policy describes how we collect and use photographs, video and recordings of students. The policy also explains when parent consent is required and how it can be provided and withdrawn.

We ask parents to also review the guidance we provide on how we use [Google Workspace for Education](#) safely at the school and what parents can do to further protect their child's information. If after reviewing the guidance, you have any questions or concerns regarding your child using Google Workspace for Education, please contact the school.

For more information about privacy, refer to: [Schools' Privacy Policy — information for parents](#).



WATTLE PLAYGROUP



COME AND JOIN US AT WATTLE GLEN PRIMARY SCHOOL
FOR A FUN AND EDUCATIONAL PLAYGROUP.
PLAYGROUP IS DESIGNED TO HELP CHILDREN SOCIALISE
AND LEARN SOME FUNDAMENTAL SKILLS BEFORE
ENTERING PRIMARY SCHOOL.

Starting
back on
February
9th

WHO CAN JOIN US?

We invite all children under the age of 6!

Our playgroup is catered to all ages as we have created a space that encourages free play, while also providing the children with opportunities to learn new skills and concepts. (We do kindly ask that children under the age of 2 to be supervised by a carer at all times.)

WHAT TO BRING?

Please bring along your child's drink bottle and their hat for outside play.

We encourage personal toys to stay at home as we have a large variety of activities and toys for children to play with.

WHEN?

Every Friday
during the school
term.

11:30-12:30

(New time for 2024)

Fruit will be
provided.

WHERE?

Wattle Glen Primary School
16-24 Reynolds Road, Wattle Glen.
Enter the school via gate 1 on
Sunnyside Crescent

CONTACT US...

16-24 Reynolds Road, Wattle Glen Vic 3096

Phone: 9438 1259

Email: wattle.glen.ps@education.vic.gov.au

Website: wattlegps.vic.edu.au



Meet the staff

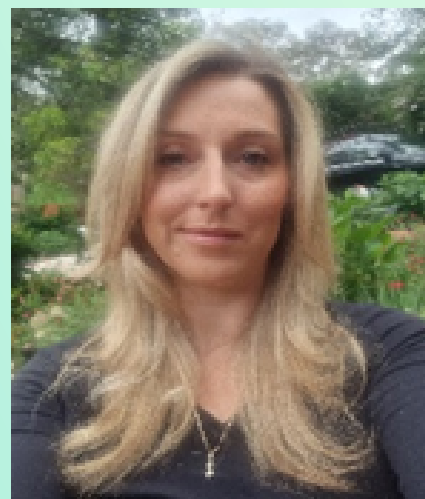
Sophie Angus, Education Support

I have worked in many different industries throughout my professional life. In 2006 I completed my Certificate IV in Hairdressing at Biba Academy. In 2013 I completed a Certificate IV in Bookkeeping and Accounting at Monash Institute. From there I went on to complete a Certificate IV in Education Support in 2022 at ITAC.

I am currently in the process of completing a Bachelor of Disability and Developmental Education at Flinders University with my focus being the implementation and improvement of inclusive education and advocacy.

I believe that all children have the right to feel safe, respected, included, and supported in all elements of the school environment. I am a strong advocate for inclusive education and strive to create a culture that celebrates diversity and builds on the strengths of each student. Where individual learning styles are encouraged and supported by utilising the most up-to-date research and strategies that achieve the best outcomes for each student. I am very excited to be joining this wonderful community at Wattle Glen Primary.

My husband Michael is an electrician and we have 3 beautiful children. As a family we all love the beach. On the weekends, you will often find us out surfing or visiting different snorkelling sites around Victoria. One day Michael and I would love to take the kids to Fiji to dive on the beautiful reefs there.



Meet the staff

Ruthi Aiken, Performing Arts Teacher

I began my journey as a teacher way back in 1996, living in country Victoria and working as a CRT, studying and working for my mum's business. I then travelled to England and Ireland and taught in many different areas of London for 2 years. I have been teaching and living in Melbourne since 2001 and have taught almost everything there is to teach, everywhere from Broadmeadows to Lalor and Eltham North.

I believe a school is a community. From the crossing supervisor to the cleaning lady, the office staff to the classroom teacher - every member of the school community has the ability to make a positive impact on the lives of our young people. I believe students learn as much outside of the classroom as they do in and I get so excited about the ways I can inspire and engage with the students and families I work with. I am a very proud mum of two daughters. Matilda is turning 13 and starting high school this year. She is taller than me, which is no ease feat, and is a keen artist. She inspires me every day with her creativity and kindness. Charlotte is turning 11 and will be in grade 5 this year. She is a whizz in the kitchen and with a make up brush. She is sassy and stubborn (shades of her mother) but that's what I love about her. I love my arts and crafts and I love being busy! I love to cook and sew and knit and paint and draw and create and organise and listen to music. That's me in a nutshell! Looking forward to a fabuloso 2024!





Community Announcements

SEEKING PLAYERS
FOR UNDER 10S MIXED AND
UNDER 12 GIRLS TEAMS



NEW PLAYERS WANTED!

PLAY WITH DIAMOND CREEK WOMENS FC

**Under
10s**



We believe in female participation in team sports & provide an inclusive environment where players of all ages & skill levels can enjoy playing football & creating new friendships.
Please contact registrations@dcwfc.com.au for more information.



Diamond Valley College School Tours

All tours commence at 9:15am

Thursday 7th March 2024
Tuesday 12th March 2024
Thursday 21st March 2024
Wednesday 27th March 2024
Tuesday 16th April 2024
Friday 3rd May 2024
Wednesday 8th May 2024

Scan the QR to book your place for one of these tours:



DIAMOND VALLEY COLLEGE
165-179 Main Hurstbridge Rd
Diamond Creek VIC 3089

www.dvallcoll.vic.edu.au

DIAMOND VALLEY SINGERS
production of

Disney
FROZEN JR.

Music and Lyrics by
KRISTEN ANDERSON-LOPEZ & ROBERT LOPEZ

Book by
JENNIFER LEE

Based on the Disney Film written by
JENNIFER LEE

and Directed by
CHRIS BUCK AND JENNIFER LEE

Licensed exclusively by
Music Theatre International
(Australasia).

All performance materials supplied by
Hal Leonard Australia.

EIGHT PERFORMANCES

MARCH 15-24

PERFORMANCES

Friday 15 March 2024	7.00pm
Saturday 16 March 2024	2.00pm
	6.00pm
Sunday 17 March 2024	2.00pm
	6.00pm
Friday 22 March 2024	7.00pm
Saturday 23 March 2024	2.00pm
	6.00pm

Warrandyte High School Theatre,
Alexander Road, Warrandyte

TICKETS

Adult	\$36
Concession / student	\$31
Under 18 years	\$19
Groups of 10+	\$31

**TICKETS ON
SALE NOW**

www.dvsingers.org

ENQUIRIES 9439 7843



dvs
DIAMOND VALLEY
SINGERS



LEARN MORE

VACCA.ORG

**START YOUR FOSTER
CARE JOURNEY**



VACCA
Connected by culture

VICTORIAN ABORIGINAL
CHILD CARE AGENCY

Blue Light

PROUDLY RUN BY LOCAL POLICE & VOLUNTEERS

DIAMOND CREEK BLUE LIGHT DISCO

15TH MARCH 2024

7-9.30PM | 8 to 13 YEAR OLDS | \$8 ENTRY

Diamond Creek Community Centre
28 Main Hurstbridge Road, Diamond Creek

Contact: Snr Sergeant Wayne Spence 9438 8300
Please ensure children have an emergency number on them.

Diamond Creek Blue Light Disco
DIAMONDCREEKBLUELIGHTDISCO

Diamond Creek Rotary Club
Da Vinci

YARRA VALLEY MODEL RAILWAY CLUB PRESENTS

THE EASTER MODEL TRAIN EXHIBITION 2024

MARCH 30 & 31
SAT: 9:30 - 17:00
SUN 10:00 - 16:00

COMMUNITY BANK STADIUM
DIAMOND CREEK
129-163 MAIN HURSTBRIDGE RD, DIAMOND CREEK VIC 3089

FEATURING OVER 20 LAYOUTS IN VARIOUS SCALES, PROTOTYPES, AND ERAS PLUS MORE THAN 25 RETAILERS AND MANUFACTURERS!
AMPLE FREE PARKING AND EASY ACCESS VIA PUBLIC TRANSPORT

SPONSORED BY:

S&S MODELS WILL JAMES RAILWAYS RAILMOTOR MODELS

TICKETS:
\$15 ADULTS
\$5 CHILDREN
\$30 FAMILY

Tickets available on the door with cash & card options

My name is Andre Leslie, and I am the Healthy Nillumbik Coordinator for Aligned Leisure.

We will be holding a Good Friday Appeal Fundraising event, at the Eltham Leisure Centre on Good Friday (March 29th).

Our annual Fundraiser is a family friendly event which aims to raise much needed funds for the Royal Children's Hospital. Last year we managed to raise over \$7000 , this year we are aiming for over \$10,000.
Wattle Glen Primary School Families,

Entry into our centre is \$10 for adults and \$5 for children. This grants access to our facility where we will have Easter Egg Hunts, Group Fitness Classes, Face Painting , Aqua Golf, Family Zumba and much more !

We are aware Good Friday is always a difficult day to find things to do as most businesses are closed. So, if staff, students, or parents are looking for something to do head down to the Eltham Leisure Centre for some Easter fun.



PROUDLY SUPPORTING

goodFriday
appeal

THE ROYAL CHILDREN'S HOSPITAL



You are invited to help celebrate

Wattle Glen Fire Brigade's 80th Anniversary

Join us for an open station, speeches and
a light lunch to celebrate 80 years!

Saturday 16th March

Open station 10.30am - 2pm

Speeches 11.30am

Refreshments 12pm

RSVP for catering purposes:

[Click here to RSVP](#)

or contact our Duty Officer in Charge

0437 716 079

