

Wattle Glen Primary School provides a learning for life environment where engagement, achievement, resilience and wellbeing are prioritised.

NOVEMBER 14, 2023

NEWSLETTER NO.19

Term 4 Dates

NOVEMBER

15th School Production
-Also full day dress rehearsal

17th Prep 2024 Transition

24th Prep 2024 Transition

27th School council meeting

DECEMBER

5th UP Day for all students

7th Up Day 2 for all students

School end of year Concert

8th Whole School Fun Day

12th Year 7 Transition for Grade 6

13th Grade 6 Graduation

15th Last Assembly for the year

Reports go home

20th Last day of school, 1:20 finish

Principal's Report

Hello Everyone,
IT'S TOMORROW!

The day we have been waiting for all year, our school performances! The students have been working so hard at their rehearsals and I am already so proud of them. If you are attending the show tomorrow you will not be disappointed. An enormous thank you to Eliza who has been working tirelessly all year to make sure our students are ready to go on stage. Eliza has coordinated it all, acting, singing, dancing, props, costumes, flyers, venue, staging, lighting, music, communication to families, all the while keeping a smile on her face! A special thank you to Kira Elliott and Caitlin O'Kelly who also came in on their weekends and holidays to assist with props and costumes, and to Sarah Suban for coordinating the "Wattle Glen Performance Cafe".

After the dress rehearsal tomorrow, if you are able to collect your child at 3pm you are more than welcome to collect them. They will need time to rest and have dinner before making their way to the Eltham Community and Conference centre. We are also encouraging you to keep your child at home on Thursday if they are tired. Wednesday night might be a late night for many students, and we understand that children will need to rest. We do not want you to feel any pressure to wake them up early and get them to school.

Last week we had an amazing turn out for our Prep Information Night. Our current prep families provided salads, drinks and desserts for our new families, and WGPS provided the BBQ. 2023 and 2024 families came together and enjoyed meeting people, while their children played on the jumping castle and in the GaGa Pit. It was a wonderful night, thank you to Michelle, Kira, Caitlin and Sarah who all helped to make the night a success.

We also hosted our first prep transition session on Friday. We have 25 preps next year and they had a wonderful time at the transition session. They also had some grade fives in the classroom assisting them.

Have a great week,
Mel



Term 4- Don't forget your hat!



School Council 2023: President: BJ McNeilly Vice President: Andrew Spence
Treasurer: Jayde Sheffield Secretary: Alison Wylie PTFA: Sarah Suban
General Members: Simon Braham, Rebecca Beasley, Megan Staley, Kylie D'Amico
DET: Meredith Fell, Michelle de Haan Executive Officer: Mel McLennan

Stars of the Week

Week 6 (no assembly week 5)

- P Alba
- 1/2 Esther
- 2/3 Ethan
- 4/5 Ethan
- 5/6 Harriet



Learning Showcase

In week six, grade 4/5 showcased their understanding of writing "Show don't Tell" paragraphs.



CROAK!

Book your tickets here

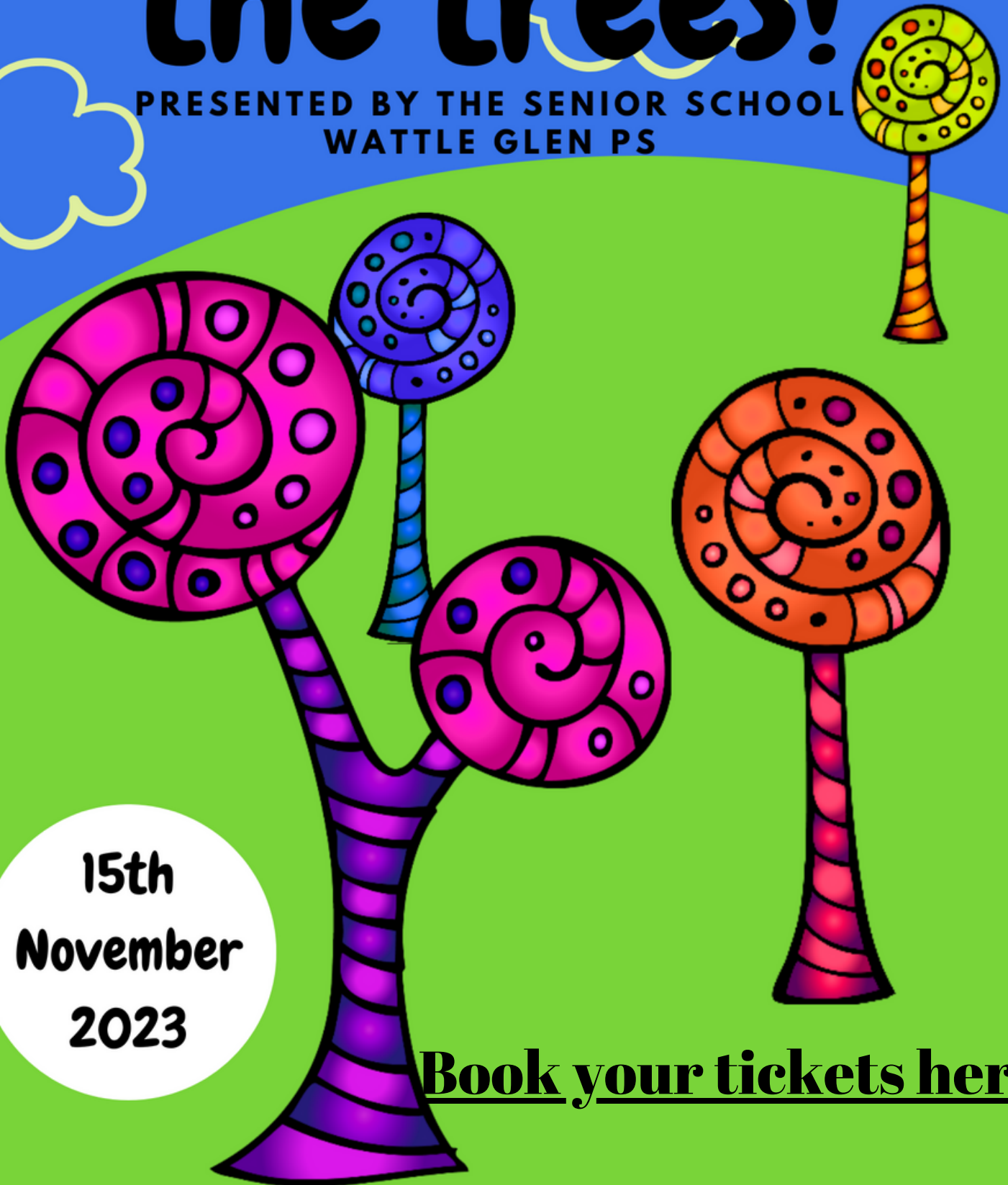
**15TH
NOVEMBER
2023**

Presented by the
Junior School
Wattle Glen PS

**A RIGHT RIBBITTING
MUSICAL
BY SARAH BAKER**

I speak for the trees!

PRESENTED BY THE SENIOR SCHOOL
WATTLE GLEN PS



15th
November
2023

[Book your tickets here](#)

WATTLE GLEN PS PERFORMANCE CAFE

FOOD

POPCORN - \$1.00

CHIPS - \$1.00

LOLLY BAGS - \$1.50

DRINKS

SOFT DRINK - \$2.00

WATER - \$2.00

COFFEE - \$4.00

TEA - \$3.00

**EFTPOS AND
CASH ACCEPTED**

WGPS PTFA FUNDRAISING AND COMMUNITY

EVENTS



*Term 4 Events- Save The Dates
and let us know if you can help*



November 15 – School Production

UPDATE!!! Food will be available to purchase at the venue.
More information to follow.



December 7 – End of year School Concert

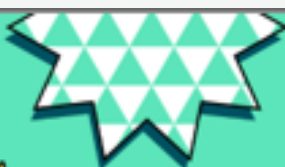
We will be selling drinks and ice-creams/ icy-poles



If you would like to help with any of
these events please email the office or
phone 9438 1259

Outside School Hours Care

Newsletter



Camp Australia
Guiding Children's Growth

14/11/23

Your
OSHC.

ROCKETEERS

Camp Australia Wattle Glen Primary school OSHC

Rubbish Robots



After School Care
13-17 November

Book now

A message from your Coordinator

Dear Parents, teachers, students and community members.

We are now into the final weeks of term 4 wow and excitement is continuing to build as we work with the children to construct the Diamond Creek Traders Association's Christmas tree. This is a wonderful collaboration between OSHC, School and community. The children have fun in giving their ideas and seeing the final product on display. Also, We are once again letting the children design and construct a robot, dinosaur or other ideas to compete with other services.

What ever the outcome we still have a load of fun. Just a reminder that we are always keen to collect recycled products- no nuts, or egg cartons please. Parents if you can please leave at OSHC service.

Thanks so much for your support

Elizabeth Brook OSHC coordinator

Activities coming up

- Emoji cups
- Recycle robot designing
- Recycled robot construction

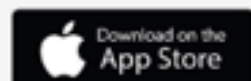
Make a booking

Join in the fun of Outside School Hours Care activities and experiences with Your OSHC and Rocketeers.

Book now

Register free and book in 24/7 via our app

To attend our program, you must register your child. You can register an account with us at pp.campaustralia.com.au or by downloading our Camp Australia smartphone app from the Apple App Store or on Google Play. Once registered, it's easy to make bookings and manage your account.



Find out more and book now at www.campaustralia.com.au



CAFE 4060

Café 4060 will be operating again in
Term 4, on the following dates;

November 20

December 4



CAFE 4060 MENU

HOT FOOD

Patties Party Pie	\$0.50 each
Patties Sausage Roll	\$0.50 each
Cheese Toastie	\$3.00
Hot Dog	\$4.00
McCain Lil' Pizza	\$3.00 each
• Ham and pineapple	
• Margherita	

*tomato sauce available

DRINKS

Juice Boxes- all flavours	\$1.00
Water 600ml	\$1.00
Milk 200ml	Free

SNACKS

Apple, Orange, Pear	Free
Messy Monkeys-BBQ flavour only	Free



WATTLE PLAYGROUP



COME AND JOIN US AT WATTLE GLEN PRIMARY SCHOOL
FOR A FUN AND EDUCATIONAL PLAYGROUP.
PLAYGROUP IS DESIGNED TO HELP CHILDREN
SOCIALISE AND LEARN SOME FUNDAMENTAL SKILLS
BEFORE ENTERING PRIMARY SCHOOL.

WHO CAN JOIN US?

We invite all children under the age of 6!

Our playgroup caters for all ages as we have created a space that encourages free play, while also providing the children with opportunities to learn new skills and concepts. (We do kindly ask that children under the age of 2 to be supervised by a carer at all times.)

WHAT TO BRING?

Please bring along your child's drink bottle and their hat for outside play.

We encourage personal toys to stay at home as we have a large variety of activities and toys for children to play with.

WHEN?

Every Friday
during the school
term.
10-11am
Fruit will be
provided.

WHERE?

Wattle Glen Primary School
16-24 Reynolds Road, Wattle Glen.
Enter the school via gate 1 on
Sunnyside Crescent

CONTACT US...

16-24 Reynolds Road, Wattle Glen Vic 3096

Phone: 9438 1259

Email: wattle.glen.ps@education.vic.gov.au

Website: wattlegps.vic.edu.au





Community Announcements

◀◀ WE WANT ▶▶

YOU!

**DIAMOND CREEK
JUNIOR FOOTBALL CLUB**

REGISTER YOUR INTEREST VIA EMAIL TODAY!

Email - secretary@diamondcreekjfc.com.au

DONT MISS OUT LIMITED SPOTS AVAILABLE
U9, U10, U11, U12, U13, U14, U15, U16, U17

FREE HOME DAY SHORTS AND SOCKS FOR NEW PLAYERS

JOIN THE BEST COMMUNITY FOOTBALL CLUB FOR SEASON '24

\$25 only Fully refundable

Pre-Registration now open!!

Why Hurstbridge Junior Football Netball Club?

- Great welcoming family Club
- Focus on fun & kids playing footy
- Country footy Club feel
- Strong Club history
- Division 1 Senior Club
- 2023 Junior Finalists
- 2023 Premiership Team
- Great coaches and families

Auskick

- Under 9s (Mixed)
- Under 10s (Mixed)
- Under 11s (Mixed)
- Under 12s Girls
- Under 12s Boys
- Under 13s Boys
- Under 14s Girls
- Under 15s Boys

HURSTBRIDGE HURRICANES

MINI HURRICANES

Intro to basketball for ages 5 - 9

FRIDAY, NOV 17TH & 24TH

5PM - 6PM

@ HURSTBRIDGE BASKETBALL STADIUM

\$20 FOR TWO SESSIONS

WWW.HURSTBRIDGEHURRICANES.COM/PROGRAMS

Could you be a Foster Carer?



Scan me!

Find out more about foster care and how you can make a difference.

We want to work with you to make a positive and lasting difference to the lives of children in your community.

As a Key Assets foster carer we'll provide you with 24/7 support, a dedicated social worker and on-going training. If you're looking to provide love, safety and care for a child we'd love to hear from you.



 **keyassets**
SERVING CHILDREN, FAMILIES & COMMUNITIES



Are you over 25 with a spare bedroom?

If you answered yes then you're already on your way to becoming a foster carer.

Victorian children and young people in your local community need a safe space to call home

Our carers Emma and Adam say...

There are so many children in need and so few people willing to take the risk.

I thank Key Assets for making a difference; the financial support means we can go beyond boundaries to give these children every opportunity to grow, develop and reach their potential.

 **keyassets**
SERVING CHILDREN, FAMILIES & COMMUNITIES

canifoster.org.au
(03) 9566 7800

November Food Drive and Fundraiser
In support of the ASRC Foodbank
Montmorency Asylum Seekers Support Group (MASSG)

- Tuna in oil of any size (95g, 185g or 425g)
 - Tomato paste
 - Coconut cream or milk
 - (small jar), jams
 - Full cream UHT milk 1 litre
- Instant coffee / black tea bags
 - Sweet / savoury biscuits
 - Basmati rice
- Tinned vegetables (peas, carrots, corn kernels)
 - Oil (750ml – 1 litre)
- Dried legumes (chickpeas, red lentils, yellow split peas)
 - Unsalted dried nuts
 - Dried fruit
- Spices (cumin, turmeric, chili, coriander)
 - Laundry powder 1kg packs
 - Laundry liquid 1 litre

If you prefer, you can donate supermarket vouchers or giftcards

Please deliver your donated items to one of our drop off points during
November

* Montmorency- Jocelyn's place, 52 Looker Road

* Hurstbridge- Nature's Harvest food store Shop 3, 920 Main Road

* Eltham- Vicki Ward's electoral office, 718 Main Road

OR

Drop it off at Wattle Glen Primary School Office and we will forward it on
your behalf.

Enquiries- Pam 0417 110 837 or
Jocelyn 0403 214 362